



BOSCHRAND

GAME LODGE

BROCHURE
2023



072 611 8501



www.boschrandlodge.co.za



[fb.com\boschrandlodge](https://fb.com/boschrandlodge)



info@boschrandlodge.co.za

BOSCHRAND GAME LODGE IS THE PERFECT GETAWAY FROM THE CITY, TO GET IN TOUCH WITH NATURE.

ANIMALS SEEN ON BOSCHRAND FARM:

- KUDU
- WATERBUCK
- NYALA
- IMPALA
- BLACK IMPALA
- OSTRICH
- WHITE & BLACK SPRINGBOK
- COPPER SPRINGBOK
- CIVET HYENA (AARDWOLF)
- BLUE WILDEBEEST
- BLACK WILDEBEEST
- ELAND
- DUIKER
- STEENBOK
- ZEBRA
- ORYX
- SABLE
- MOUNTAIN REEDBUCK
- COMMON REEDBUCK
- GREY REEDBUCK
- GIRAFFE
- DONKEY
- OTTER
- CARACALS
- JACKAL
- BLESBOK
- WHITE BLESBOK
- ROCK HYRAX (DASSIE)
- GUINEA FOWL
- PORCUPINE
- WARTHOG
- RED LECHWE
- RED HARTEBEEST
- MEERKAT
- MONGOOSE
- RABBITS
- GENET (MUSKELJAATKAT)
- FALLOW DEER

SPA TREATMENTS AVAILABLE

GAME DRIVES @ R200.00 PER PERSON

R100.00 PER PERSON 12 YEARS OLD AND YOUNGER

INCLUDES 500ML WATER

BOSCHRAND LODGE FEATURES AN ON-SITE RESTAURANT AND BAR WITH A GREAT SELECTION OF FOOD TO CHOOSE FROM. A LA CARTE MENU AND SET BREAKFAST.

THE BAR IS OPEN FROM 08:00 UNTIL 22:00 DAILY

BREAKFAST IS SERVED FROM 08:00 UNTIL 10:00

BREAKFAST CONSISTS OF: 2 X CHEESE GRILLERS, 2 X SLICES BACON, EGGS, TOAST, YOGHURT WITH MUESLI AND A COFFEE STATION.

LUNCH IS AVAILABLE FROM 12:00 UNTIL 15:00

DINNER IS AVAILABLE FROM 18:00 UNTIL 21:00

ACCOMMODATION

PLEASE NOTE, CHECK-IN TIME IS BETWEEN 14:00 AND 21:30.
CHECK OUT TIME IS STRICTLY 10:00. **NO MUSIC ALLOWED ANYTIME.**

BED & BREAKFAST ACCOMMODATION

R900.00 (WEEKDAYS) / R1050 (WEEKENDS) PER PERSON
R1300.00 (WEEKDAYS) / R1450 (WEEKENDS) PER COUPLE

1. WATERBOK: 2X ¾ BEDS
2. RENOSTER: 2X ¾ BEDS
3. ROOIBOK: 1X QUEEN BED
4. SPRINGBOK: 1X QUEEN BED
5. KUDU: 1X QUEEN BED
6. ORYX: 1X QUEEN BED



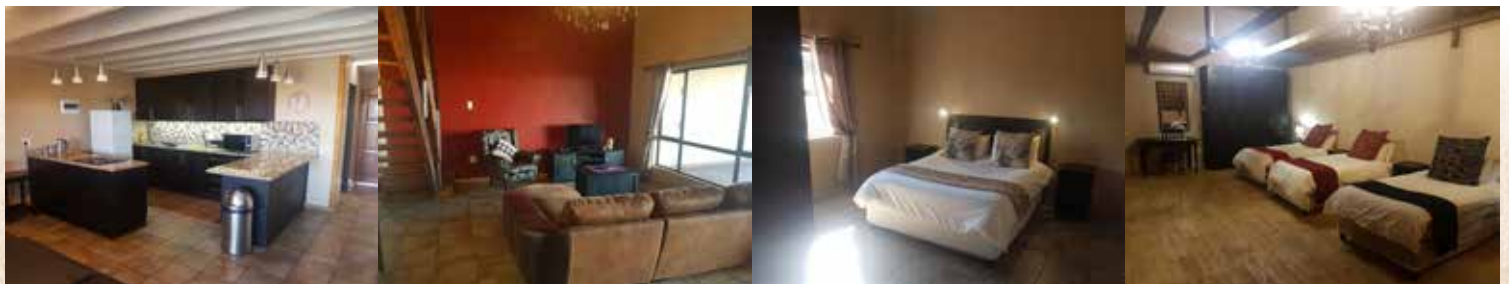
ALL OUR BED & BREAKFAST ROOMS HAVE AIR-CONDITIONING, BAR FRIDGES, MICROWAVES, TV'S WITH NETFLIX, TOWELS, COFFEE STATIONS AND BASIC AMENITIES. FEEL FREE TO VISIT OUR WEBSITE TO VIEW GALLERIES OF EACH ROOM.

PLEASE NOTE, BED & BREAKFAST UNITS ARE NOT SELF-CATERING. BREAKFAST IS INCLUDED IN THE PRICE OF ACCOMMODATION. LUNCH/DINNER IS AVAILABLE AT THE RESTAURANT.

SELF CATERING ACCOMMODATION

R2200.00 (WEEKDAYS) / R2500 (WEEKENDS) PER UNIT, PER NIGHT.
ACCOMMODATES SIX GUESTS.

BREAKFAST AND DAILY HOUSEKEEPING EXCLUDED FROM RATE.



ALL OUR SELF-CATERING UNITS HAVE FULL KITCHENS, BATHROOMS, DINING ROOMS, LIVING ROOMS WITH TV'S AND NETFLIX, MAIN BEDROOMS (SLEEPS 2), LOFT AREA (SLEEPS 4), OUTSIDE DECK AREA WITH BUILT IN BRAAI, AIR-CONDITIONING, FIREPLACES, TOWELS, BED LINEN, COFFEE, TEA, SUGAR.

NO MUSIC ALLOWED AT ANYTIME

FREE GIFT: 1X BAG CHARCOAL, 1X BUNDLE FIREWOOD, FIRELIGHTERS,

BUSH CAMP ACCOMMODATION

R1000.00 PER UNIT, PER NIGHT

NO MUSIC ALLOWED AT ANYTIME

2 TYPES OF UNITS AVAILABLE:

- 8 SLEEPERS (4 X SINGLE BUNK BEDS)
- 6 SLEEPERS (1 X DOUBLE BED AND 2 SINGLE BUNK BEDS)

ALL THE UNITS HAVE A BATHROOM (SHOWER, BASIN AND TOILET), FRIDGE/FREEZER COMBO, KETTLE, TRASH BIN AND BEDS WITH MATRASSES, PILLOWS AND BED LINEN. THE UNITS DO NOT CONTAIN ANY CUTLERY, CROCKERY OR TOWELS.

REMEMBER TO PACK THE FOLLOWING:

- TOWELS
- TOILET PAPER
- COFFEE CUPS
- GROCERIES
- POTS & PANS
- COOKING UTENSILS
- CUTLERY
- CROCKERY
- BEVERAGES
- DISH TOWELS & SOAP
- BOTTLE OPENER
- TOILETRIES
- TRASH BAGS
- CAMPING CHAIRS
- WOOD/CHARCOAL



BOMA AND BRAAI AREA

THERE IS A CENTRALLY LOCATED COMMUNAL BOMA AND BRAAI AREA SITUATED IN THE CENTER OF THE BUSH CAMP.

AVAILABLE AMENITIES INSIDE THE BOMA: GAS BURNERS, 4 X BRAAI STANDS, 2 X FIRE BOMAS, 2 X BASINS, PICNIC BENCHES AND SEATING AROUND THE FIRE BOMAS.

THE BOMA AREA IS AVAILABLE AT (R3000 WEEKDAYS), (R3500 WEEKENDS), (R4000 PEAK SEASON AND PUBLIC HOLIDAYS) TO HIRE FOR EXCLUSIVITY. THIS ENABLES YOU TO ENJOY THE ENTIRE AREA WITHOUT OTHER GUESTS IN THE CAMP.

NO MUSIC ALLOWED AT ANYTIME



INCLUDED IN THE BOMA AND BRAAI AREA HIRE PACKAGE:

- 30 X PLATES, FORKS, SPOONS, KNIVES, BEER GLASSES, SERVIETTES
- 5KG BAG OF CHARCOAL AND FIRELIGHTERS
- 2 X BAGS OF FIREWOOD
- 4 X BAGS OF ICE
- BRAAI TONGS AND A CHAFING DISH FOR MEAT

EXTRAS AVAILABLE:

- FIREWOOD @ R75.00 PER BAG
- 5KG CHARCOAL @ R60.00 PER BAG
- ICE @ R15.00 PER BAG
- EXTRA PLATE, FORK, SPOON, KNIFE, GLASS, SERVIETTE @ R10.00 P.P.

FUNCTIONS AT BOSCHRAND LODGE

BOSCHRAND LODGE IS THE PERFECT VENUE FOR ANY FUNCTION. OUR FUNCTION MENU HAS A WIDE VARIETY OF OPTIONS TO CHOOSE FROM. THE PROFESSIONAL AND EXPERIENCED STAFF AT BOSCHRAND KNOW HOW TO MAKE YOUR SPECIAL OCCASION A MEMORABLE EXPERIENCE AND AS STRESS FREE AS POSSIBLE. BOSCHRAND LODGE PROVIDES A VARIETY OF IN-HOUSE SERVICES TO HELP YOU MAKE YOUR SPECIAL EVENT EASY TO PLAN. FOR MORE INFORMATION AND PRICES IN REGARD TO EVENTS, WEDDINGS AND FUNCTIONS, PLEASE MAKE AN APPOINTMENT WITH ANGELIQUE VAN DEN BERG TO DISCUSS THE DETAILS OF YOUR FUNCTION. EACH FUNCTION AT BOSCHRAND LODGE IS AN IMPORTANT EVENT AND WE WOULD LIKE TO DISCUSS THE DETAILS IN PERSON, IF POSSIBLE, TO INSURE THAT ALL YOUR REQUIREMENTS ARE FULFILLED.

FUNCTION HALL CAPABILITIES:

- 200 GUESTS SEATED AT TABLES WITH A DANCE FLOOR
- 300 GUESTS SEATED AT TABLES WITHOUT A DANCE FLOOR
- 700 CHAIRS IN ROWS FACING A SINGLE DIRECTION (PRESENTATIONS, SHOWS, AUCTIONS, CONFERENCES, ETC.)
- THE FUNCTION HALL MAY BE DIVIDED FOR TWO SEPARATE USES AT THE SAME FUNCTION. (EXAMPLE: WEDDING SERVICE AND RECEPTION OR CONFERENCE AND REFECTORY, INSIDE THE SAME BUILDING)

FOR INFORMATION AND QUOTES:

DOWNLOAD THE FILES FROM OUR WEBSITE, WWW.BOSCHRANLODGE.CO.ZA
OR REQUEST THE INFORMATION VIA EMAIL: INFO@BOSCHRANLODGE.CO.ZA



WHERE TO FIND US:

DIRECTIONS FROM BLOEMFONTEIN TO BOSCHRAND LODGE:

- TRAVEL ON THE N1 NORTH, TOWARDS KROONSTAD
- GO THROUGH THE VERKEERDEVLEI TOLL GATE
- DRIVE APPROXIMATELY 40KM AND TAKE THE FIRST WINBURG OFF RAMP.
- TURN RIGHT AT THE INTERSECTION ON TOP OF THE BRIDGE, DRIVE OVER THE N1 ON THE BRIDGE TOWARDS WINBURG TOWN.
- DRIVE APPROXIMATELY 200M AND TAKE THE FIRST TURN RIGHT ONTO THE GRAVEL ROAD. (THERE IS A SIGN AT THE TURN OFF THAT SAYS: BOSCHRAND GAME LODGE)
- DRIVE 2KM ON THE DIRT ROAD. THE DIRT ROAD ENDS AT BOSCHRAND LODGE'S GATE.
- PHONE THE NUMBER ON THE GATE TO GAIN ENTRY. 072 611 8501

DIRECTIONS FROM JHB TO BOSCHRAND LODGE:

- TRAVEL ON THE N1 TOWARDS KROONSTAD.
- DRIVE THROUGH KROONSTAD AND VENTERSBURG.
- DO NOT TAKE THE FIRST WINBURG OFF RAMP (N5) TO WINBURG. STAY ON THE N1 TOWARDS BFN.
- TAKE THE SECOND OFF RAMP TO WINBURG (SIGN SAYS: WINBURG/ BRANDFORT/ BELLS PASS)
- TURN LEFT AT THE INTERSECTION ON TOP OF THE BRIDGE TOWARDS WINBURG TOWN.
- DRIVE APPROXIMATELY 200M AND TAKE THE FIRST TURN RIGHT ONTO THE GRAVEL ROAD. (THERE IS A SIGN AT THE TURN OFF THAT SAYS: BOSCHRAND GAME LODGE)
- DRIVE 2KM ON THE DIRT ROAD. THE DIRT ROAD ENDS AT BOSCHRAND LODGE'S GATE.
- PHONE THE NUMBER ON THE GATE TO GAIN ENTRY. 072 611 8501

DISTANCES FROM AIRPORTS:

- O.R. TAMBO INTERNATIONAL AIRPORT - 320KM
- BRAM FISCHER INTERNATIONAL AIRPORT - 111KM
- CAPE TOWN INTERNATIONAL AIRPORT - 1108KM
- KING SHAKA INTERNATIONAL AIRPORT - 558KM
- PORT ELIZABETH INTERNATIONAL AIRPORT - 761KM

GPS COORDINATES:

28.5540° S, 26.9812° E

CLICK THE IMAGE TO VIEW IN GOOGLE MAPS:

